

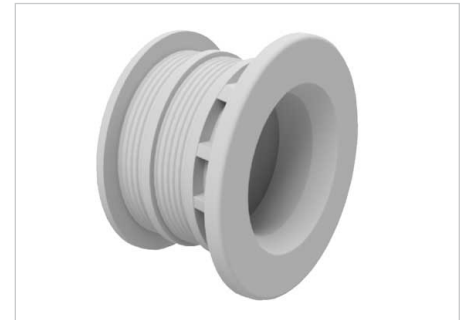
TECHNICAL DATA SHEET - VAND-CON KAPPE RK D & PROP RST D

DESCRIPTION

Vand-Con Kappe & Prop is a system made of polyolefin that ensures a watertight system when used with our distance tube 22/26 and Cone SK 22.

The system is tested to withstand water pressure up to 5 bar. For waterproof casting it is recommended to use a cone for counter sinking and Rep 45 Repair mortar to fill the hole.

Note; when using the Vand-Con Kappe RK D, the total length of the pipe is reduced with 9.5 mm per Vand-Con Kappe RK D.



Vand-Con Kappe RK D

TYPES

Article no.	Description	Packaging (bag/pallet)
1051112	Vand-Con Prop RST D 26	500 pcs./48.000 pcs.
1051127	Vand-Con Kappe RK D 26	500 pcs./20.000 pcs.



Vand-Con Prop RST D

ASSEMBLY

- A)** Determine the length of the tube and cut it to the desired size :
Deduct the Cone and the Kappe length.
 - 30 mm (2 x concrete cover RK D, 15 mm each)
 - 60 mm (2x concrete cover, Cone 30 mm each)= the length of tube
- B)** Place the two Vand-Con Kappe on each side of the distance tube HPDE 22/26 .
Put additionally on both sides, but at least on the outer side of the formwork, the support Cone SK 22.
- C)** Fasten and close respectively the complete formwork and finish concreting.
- D)** After the concrete has cured the support Cone SK 22 has to be removed upon removal of formwork.
- E)** Then, drive the Vand-Con Prop into the Vand-Con Kappe on both sides.
- F)** Lastly the hole is filled with Rep 45 or similar.

Please keep in mind that the watertightness is only ensured if the work is done with care (e. g. compacting of concrete etc.) observing the relevant processing guidelines.



Plastic distance tube
with Vand-Con Kappe RK D in both ends

STORAGE

Can be stored inside and outside all year round in original packaging.

ENVIRONMENT/SAFETY

A safety data sheet is not required for this product.

CE-MARKING

Vand-Con Kappe RK D and Vand-Con Prop RST D is not subject to a harmonized standard and therefore does not have to be CE marked according to Construction Products Regulation No. 305-2011.

Note: We take reservations for typing errors and refer to the current version of data is always available at www.haucon.dk or can be requested by contacting the expedition. Current revision number is stated at the top left corner.